

## HOW TO FIND OUR VENUE

First of all, don't trust your navigation system, unless you type in the coordinates:

47.694062, 8.635756

Our postal address is «Baumgartenstrasse 19» but it's on the other side of the building and if you go there, you'll end up in a dead end, so don't do it!

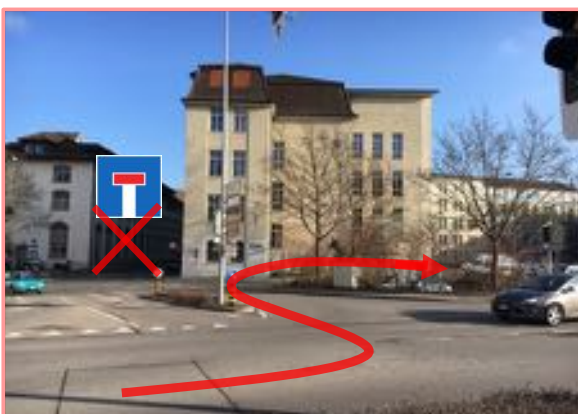
Coming from highway, turn right, then you're on the road «Mühlenstrasse». Follow the riverbank until you get to the «Rheinufer-Strasse» and when you see this, turn left:



TURN LEFT HERE:



**WATCH OUT!** IMMEDIATELY AFTER TURNING LEFT, TURN RIGHT AGAIN INTO THE PARKING LOT.



AND NOW FROM A BIRD'S EYE VIEW:

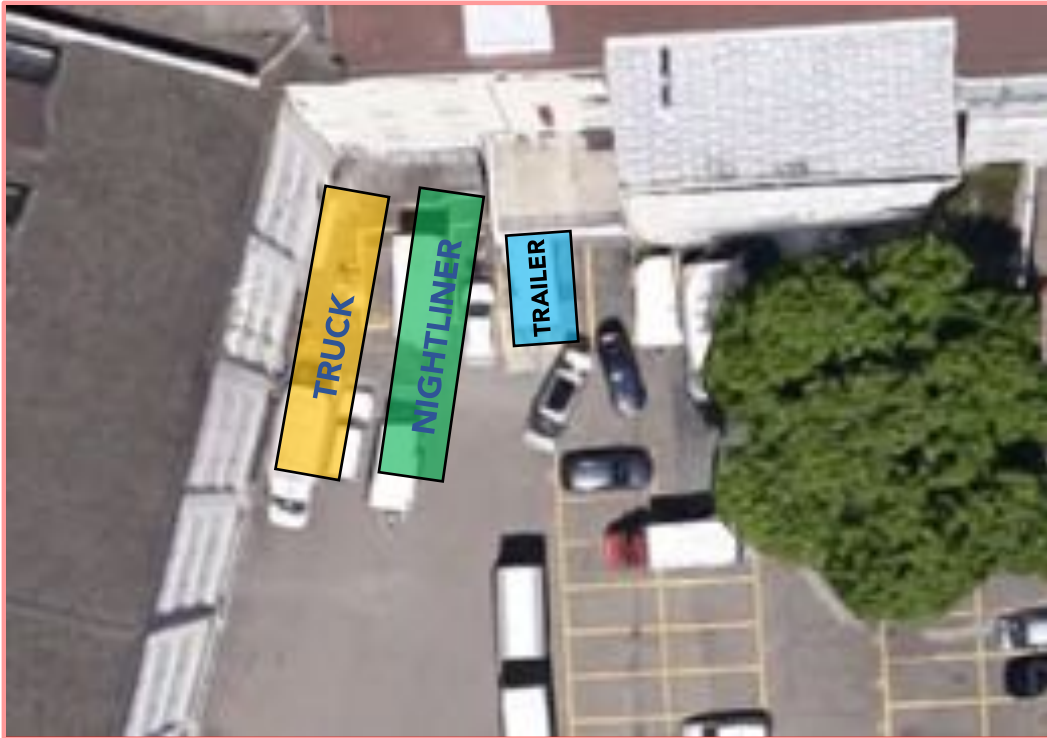


Can you see this? Then you're right, congrats!



## NIGHTLINER / TRUCK


Your nightliner and/or truck is usually parked like this:  
(If you have a trailer with you, it has to be **uncoupled and parked separately**)



It is important that you communicate with your promoter when travelling by nightliner/truck, the parking spaces must be reserved in advance.

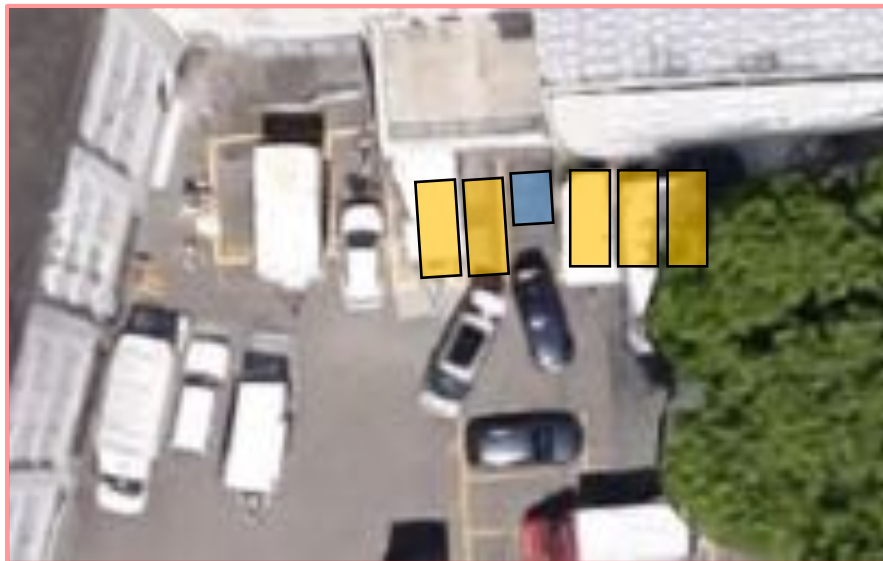


## GENERAL INFORMATIONS FOR NIGHTLINER TOURS:

-  shows you the power connection for your bus. The connection is always available, also during the night. We provide a CEE16A and a CEE32A connection.
- We cannot provide a water connection, sorry.
- Please note: We cannot provide toilets and showers until our crew arrives.
- If you arrive during the day, please check with us if you are standing correctly before you are not allowed to move the vehicle.
- In any case, please make sure that vehicles already parked can move and drive away and not get stuck by you.
- If you are unsure, please contact your promoter, he will be happy to help you in all matters.

## PASSENGER CAR / VAN / TRAILER

We have 3 Parking spaces in front of the stage entrance and 3 next to it. If you have a trailer with you, it has to be **uncoupled and parked separately**, like this:



Your promoter needs to know how many cars you are travelling with, the parking spaces must be reserved in advance.

## GENERAL INFORMATIONS:

- In any case, please make sure that vehicles already parked can move and drive away and not get stuck by you.
- Please note: We cannot provide toilets and showers until our crew arrives.
- If you are unsure, please contact your promoter, he will be happy to help you in all matters.

**WE WISH YOU A SAFE RIDE AND LOOK FORWARD TO A GREAT SHOW AT KAMMGARN**